

SAWS

"YOUR LAPIDARY
GENERAL STORE"



Order Toll Free: (888) 612-3444

Web Site: www.lapidarysupplies.com

MODEL C DIAMOND BAND SAW by Gryphon

A fast cutting diamond band saw for glass, tile, gemstones and ceramic materials. Cuts different shapes with ease. Cuts a radius as tight as 3/16". Smooth saw cuts eliminate excessive grinding. Wear resistant blade travels at 2,000 feet per minute. Direct drive motor eliminates pulleys. Blade guide beneath the work surface provides superior support leaving the work table unobscured. Unit constructed of engineered glass filled plastics, 115 VAC motor. **USES WATER ONLY AS COOLANT!**

Gryphon



Model C

MLS Part #: 272500

Price: \$400.00

MLS PART NUMBER	PARTS DESCRIPTION	PRICE
272510	BLADE, Diamond, for Gryphon Model C.	\$53.80
272514	FUSERS BLADE, Diamond, for Gryphon Model C.	\$60.50
272520	BLADE GUIDES, for Gryphon Model C Diamond Band Saw, Package of 4.	\$6.50
272532	MAINTENANCE REBUILD KIT for Model C Saw, Includes upper and lower wheel bands and lower wheel bearing.	\$19.50

ZEPHYR RING SAW by Gryphon

A new saw just out by Gryphon. Similar in design to the other ring saws on the market. Cutting head removes to become a portable unit. Unit has a deep throat and large table with an unobstructed view. Constructed of engineered glass filled plastics, 115 VAC motor. **USES WATER AS COOLANT!**



Gryphon

MLS Part #: 275000

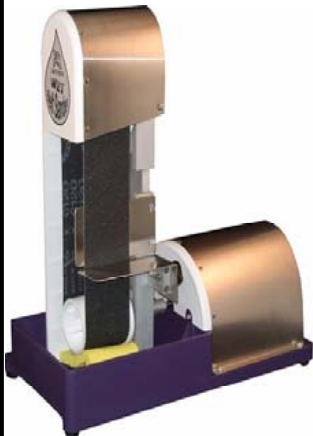
Price: \$468.00

MLS PART NUMBER	PARTS DESCRIPTION	PRICE
275100	BLADE, Diamond, Replacement for Zephyr Ring Saw	\$59.95
275110	DRIVE BELT for Zephyr Ring Saw.	\$29.95
275120	RUBBER INSERTS for Drive wheels, Set of 3 for Zephyr Ring Saw.	\$14.95
275130	GUIDE WHEEL with Bearing.	\$24.95
275140	IDLER WHEEL with Bushings.	\$22.95

PUMPS

WET BELT SANDER/ GRINDER by Gryphon

A fast cutting silicon carbide wet belt sander. For fast removal of stock. This new Gryphon product presents an entirely new category of tool for the lapidary artist. With the large 90 square inches of grinding surface, you can now accurately sand straight lines or true up large curved surfaces. A small platform helps to steady your work and tilts for easy beveling. A variety of belts available from coarse to ultra smooth for polishing. Motor is 115 VAC. **USES WATER ONLY AS COOLANT!**

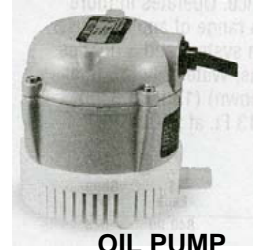


MLS Part #: 274000

Price: \$316.80



WATER PUMP



OIL PUMP

MLS PART NUMBER	PARTS DESCRIPTION	PRICE
280000	PUMP for Water (Not for use with Oil), Great for use with arbors and wet diamond polisher, Submersible, 115 VAC.	\$60.00
281000	PUMP for OIL or Water, Great for use with saws and other tools requiring a forced feed oil supply (e.g. - Lortone LS14 Drop Saw), Submersible, 115 VAC.	\$112.75

➔ See page 29 for Belts.